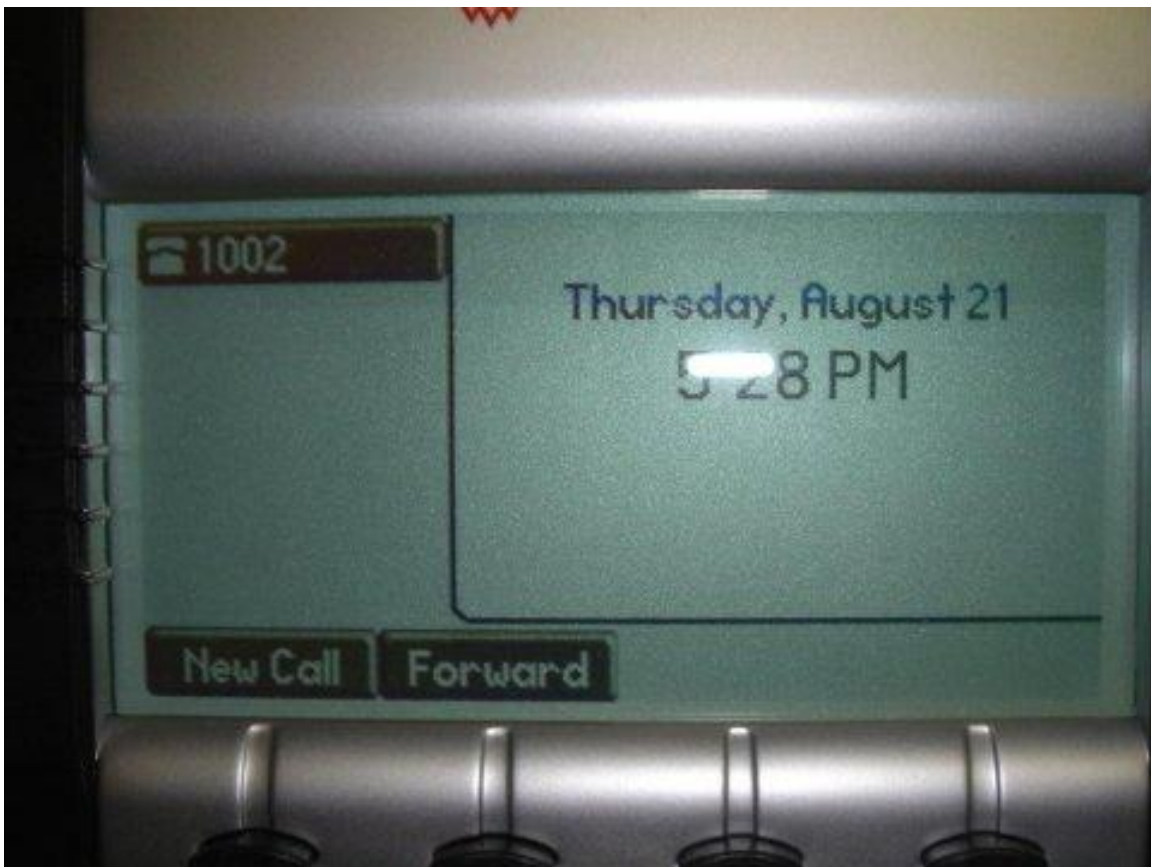


Polycom SoundPoint IP SIP Configuration

**** These instructions apply to the following units: ****

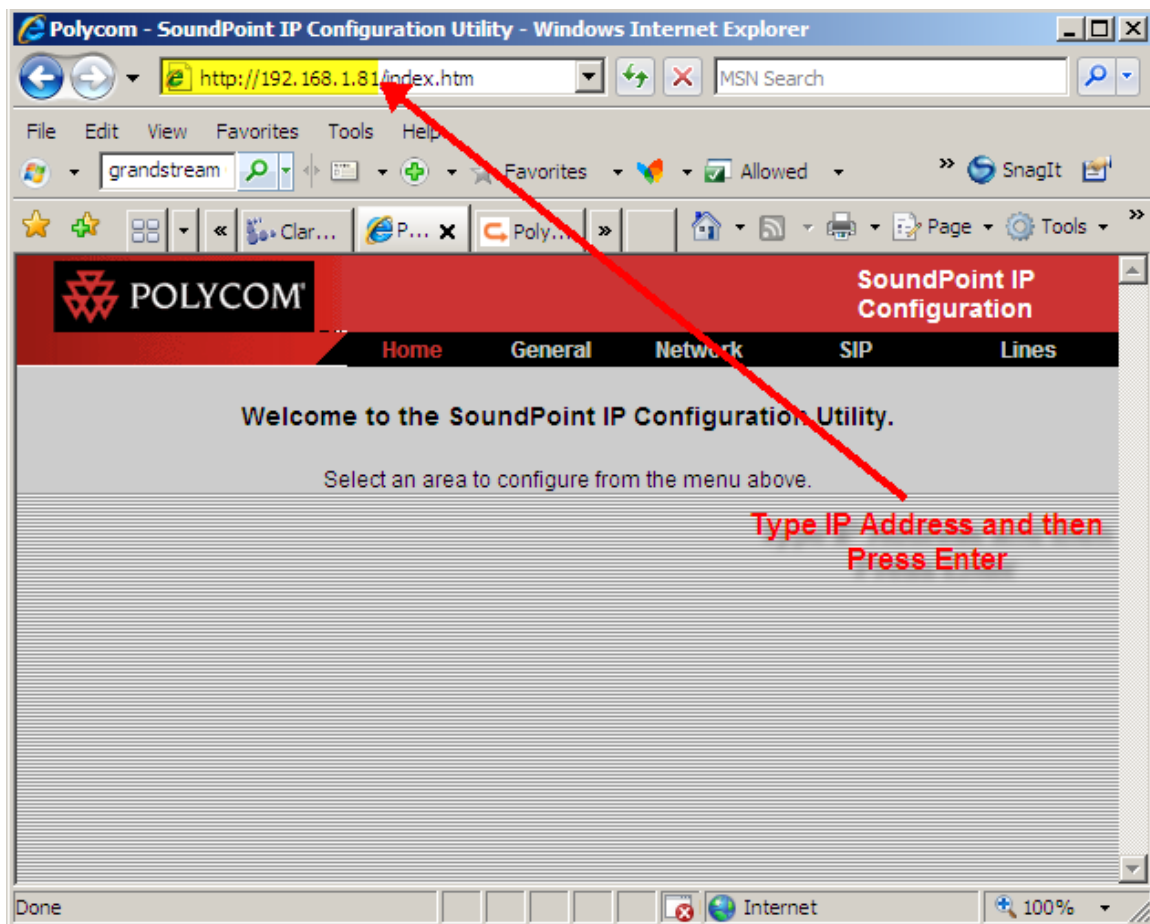
- IP 301 - IP-320/330
- IP-321/331 - IP-335
- IP 430 - IP-450
- IP 501 - IP 550
- IP 560 - IP 601
- IP 650 - IP 670
- IP 4000 - IP-5000
- IP 6000 - IP 7000
- VVX-1500 (SIP)

1. Power on IP Phone.
2. Allow the Polycom Soundpoint IP Phone to boot completely to the main display on LCD.

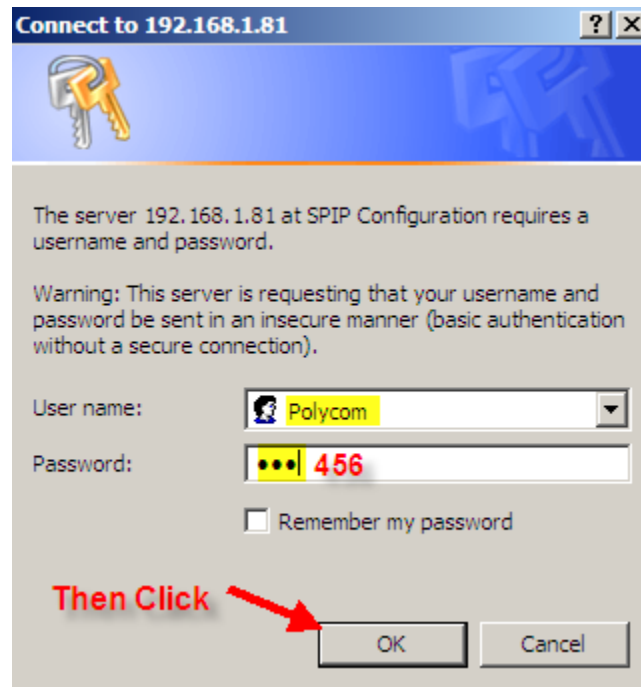


3. Press the Menu button.

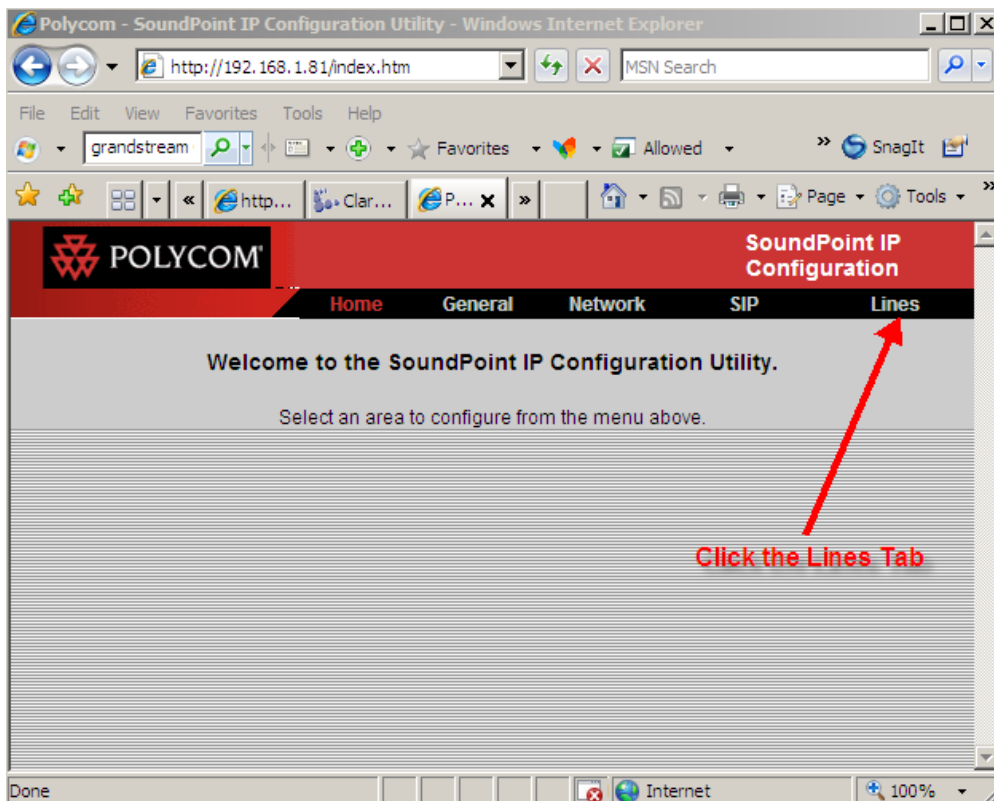
4. Using the “down” arrow directional key, scroll to the STATUS option and then press Select.
5. Using the “down” arrow directional key, scroll to the NETWORK option and then press Select.
6. Select TCP/IP Parameters option.
7. Gather the Soundpoint IP Phone’s IP Address. (ex. 192.168.xxx.xxx)
8. Press the Exit option.
9. From a computer on the same network as the Soundpoint IP Phone, open a web browser (Internet Explorer).
10. Enter the IP Address of the Soundpoint IP Phone in the web browser location bar.



11. You will be prompted for a Username and Password. The default Polycom Username is: **Polycom** (case-sensitive) and Password is: **456**.



12. On the Web Configuration page, click the Lines Tab.



13. Enter the following information on the Lines Tab:

Line Parameters:

Line 1	Line 2	Line 3	Line 4	Line 5	Line 6
Line 7	Line 8	Line 9	Line 10	Line 11	Line 12
Line 13	Line 14	Line 15	Line 16	Line 17	Line 18
Line 19	Line 20	Line 21	Line 22	Line 23	Line 24
Line 25	Line 26	Line 27	Line 28	Line 29	Line 30
Line 31	Line 32	Line 33	Line 34		

Enter the Following Information

Line 1

Identification

Extension Display Name

Extension Address

Extension Auth User ID

Extension Auth Password

Extension Label

Type Private Shared

Third Party Name

Num Line Keys

Calls Per Line

Server 1

IP PBX IP Address Address

5060 Port

Transport DNSNaptr

360 Expires

1 Register

0 Retry Time Out

0 Retry Max Count

3600 Line Seize Time Out

Server 2

Address

Port

Transport DNSNaptr

Expires

Register

Retry Time Out

Retry Max Count

Line Seize Time Out

Call Diversion

Disabled On Shared Yes No

Diversion Contact

On Specific Caller Enabled Disabled

Forward All Enabled Disabled

On Busy Enabled Disabled

Busy Contact

On No Answer Enabled Disabled

No Answer Timeout 60

No Answer Contact

On Do-Not-Disturb Enabled Disabled

Do-Not-Disturb Contact

Message Center

Subscriber

Callback Mode Registration

Callback Contact

Then Click top

Submit

SIP Password or Secret for Extension in IP PBX

Display Name: Extension #

Address: Extension#

Auth User ID: Extension #

Auth Password: Password given to this extension on your IP PBX

Label: Extension #

Address: IP PBX IP Address

Port: 5060

Expires: 3600

Register: 1 (Equals YES)

Retry Time Out: 0

Retry Max Count: 0

Line Seize Time Out: 3600

14. Click the SUBMIT button.
15. The Polycom Soundpoint IP Phone will reboot. Allow the unit to reboot completely to the main screen on LCD display.
16. Your unit is now configured and is registered to your IP PBX. Make test calls to ensure registration is a success. Also note on the main screen, the phone icon next to the phone label should be completely “solid”.

