

# NetVanta 1534P

## Layer 3 Lite Gigabit Ethernet Switch



### Product Features

- 28-port multi-layer Gigabit Ethernet switch
- 24-Gigabit Ethernet ports and four SFP optical ports
- Two standard 1 Gbps SFP ports and two enhanced 2.5 Gbps SFP ports
- 802.3af (PoE), 802.3at (PoE+) and Legacy PoE
- Non-blocking, up to 62 Gbps switching capacity
- Line rate Layer 2 and Layer 3 Lite capabilities
- DHCP network forensics
- 802.1Q VLANs, Private VLANs and VLAN assignment via 802.1x
- VoIP Setup Wizard
- Advanced QoS with support for 802.1p and DiffServ prioritization with four queues per egress port
- Automate actions with Port Scheduler and TCL scripting
- VoIP ready with LLDP/LLDP-MED and voice VLANs
- Business-class security with RADIUS, TACACS+, 802.1x and port security
- Optimized for iSCSI Storage Area Networks (SANs) solutions
- Wi-Fi® access controller for centralized management of NetVanta Wireless Access Points (WAPs)
- Cable and SFP diagnostics provides easy to use troubleshooting tools for copper and fiber cable
- Familiar CLI and Web GUI
- Limited lifetime warranty
- Next business day advance replacement

The NetVanta® 1534P is a managed, 28-port PoE, Layer 3 Lite, Gigabit Ethernet switch designed for fast, secure, cost-effective Local Area Network (LAN) switching. This scalable, full-featured business-class switch is perfect for higher-bandwidth Voice over IP (VoIP) applications needing PoE to power IP Phones, as well as Gigabit-to-the-desktop deployments. Experience the ease of management with an easy-to-use Web-based Graphical User Interface (GUI) and familiar Command Line Interface (CLI).

#### Hardware

The NetVanta 1534P rackmount switch provides 28 Gigabit Ethernet ports, consisting of 24 fixed 10/100/1000Base-T Ethernet ports, two 1.0 Gbps Small Form-factor Pluggable (SFP) ports, and two 2.5 Gbps enhanced SFP ports. Together the four SFP ports can provide up to 14 Gbps of bandwidth between interconnected NetVanta 1534P switches.

#### Multi-layer Switching

The NetVanta 1534P supports advanced multi-layer (Layer 2 and Layer 3 Lite) switching with up to 16 static routes allowing it to easily scale from SMBs to enterprise-size networks.

#### VoIP Ready

The NetVanta 1534P is VoIP-ready with the ability to automatically configure IP phones using LLDP-MED, and the ability to separate voice traffic onto voice VLANs, to simplify the deployment of VoIP. In addition, the switch includes a VoIP Setup Wizard (available via a Web-based Graphical User Interface (GUI) or Command Line Interface (CLI)), which automates the complete VoIP setup process reducing deployment time and eliminating errors. An on-demand VoIP report provides a printable summary of the switch VoIP configuration, as well as providing alerts and recommendations to improve performance. All NetVanta switches support QoS to prioritize VoIP traffic, 802.1p and DiffServ Class of Service (CoS).

#### PoE

The NetVanta 1534P provides up to 370 watts of 802.3af (PoE), 802.3at (PoE+) and Legacy PoE for powering IP phones, wireless access points (WAPs), and other devices requiring LAN power.

#### Supplemental PoE Power

When deployed with the NetVanta 1131 RPS/EPS unit, the NetVanta 1534P supports power redundancy

as well as enhanced PoE. The NetVanta 1131's EPS output provides up to 370 watts of backup PoE for redundancy, and can also provide up to 370 watts of additional PoE, effectively doubling the available PoE budget (up to 740 watts).

#### Security

The NetVanta 1534P offers a variety of data security features including DoS protection, MAC-based port security, multilevel user passwords, Secure Shell (SSH) and Secure Socket Layer (SSL) for encrypted user login, and Access Authentication and Authorization (AAA) for authentication with RADIUS and TACACS+. With features such as 802.1x and port security, administrators can assure that only authorized users are allowed access to the network.

The ADTRAN® Operating System (AOS) also features desktop auditing using DHCP in conjunction with Microsoft Network Access Protection (NAP) protocol to monitor the health of client computers. The two protocols work together to ensure that systems connected to the network are using appropriate corporate policies, such as firewall settings, antivirus settings and other client health information.

#### Port Scheduler

NetVanta 1534P allows ports to be enable or disabled based on time of day. This ability to schedule available ports allows for added security and can provide less power consumption during off hours saving on utility cost.

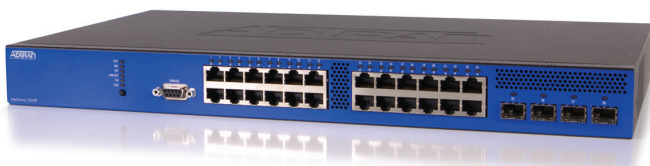
#### iSCSI Optimized

All ADTRAN NetVanta Gigabit Ethernet switches are optimized for iSCSI SANs deployments. Network administrators can take advantage of features such as Jumbo frame support (up to 13K), separation of iSCSI network traffic utilizing VLANs, and 802.3x flow control to seamlessly integrate ADTRAN switches with iSCSI SANs devices.

#### Administration

AOS offers both a CLI and an intuitive Web-based GUI with step-by-step configuration wizards. For automating setup and configuration, NetVanta 1534P supports Auto-Config which provides the ability to automatically obtain the switch configuration via DHCP.

AOS also offers network forensics to aid in troubleshooting network problems by allowing network administrators to easily locate devices on the network by MAC or IP address.





ADTRAN, Inc.  
Attn: Enterprise Networks  
901 Explorer Boulevard  
Huntsville, AL 35806  
P.O. Box 140000  
Huntsville, AL 35814-4000

256 963-8000  
256 963-8699 fax

**General Information**  
800 9ADTRAN  
info@adtran.com  
www.adtran.com

**Pre-Sales Technical Support**  
888 423-8726  
application.engineer@adtran.com  
www.adtran.com/presales

**Post-Sales Technical Support**  
888 423-8726  
support@adtran.com  
www.adtran.com/support

**Where to Buy**  
888 423-8726  
channel.sales@adtran.com  
www.adtran.com/where2buy

**ProServices<sup>SM</sup>**  
888 874-2237  
proservices@adtran.com  
www.adtran.com/proservices

**Global Inquiries**  
256 963-8000  
256 963-6300 fax  
international@adtran.com

ADTRAN believes the information in this publication to be accurate as of publication date, and is not responsible for error. Specifications subject to change without notice. ADTRAN, n-Command and NetVanta are registered trademarks of ADTRAN, Inc. and its affiliates in various countries. All other trademarks mentioned in this document are the property of their respective owners.

ADTRAN warranty duration and entitlements vary by product and geography. For specific warranty information, visit [www.adtran.com/warranty](http://www.adtran.com/warranty)

ADTRAN products may be subject to U.S. export controls and other trade restrictions. Any export, re-export, or transfer of the products contrary to law is prohibited. For more information regarding ADTRAN's export license, please visit [www.adtran.com/exportlicense](http://www.adtran.com/exportlicense)



TL19.1270



NSAI

ADTRAN is an ISO 9001, ISO 14001, and a TL 9000 certified supplier.

61702591G2-8A September  
Copyright © 2014 ADTRAN, Inc.  
All rights reserved.

# NetVanta 1534P

## Layer 3 Lite Gigabit Ethernet Switch

### Product Specifications

#### Physical Interface

##### Ethernet Ports

- 24 –10/100/1000Base-T
- 2–Standard 1 Gbps SFP ports
- 2–Enhanced 1.0/2.5 Gbps SFP Ports
- Auto rate/duplex/MDI/MDI-X

##### Console Port

- DB-9, RS-232

#### Switching Performance

- Non-blocking Layer 2/3 Switching

#### Maximum Forwarding Bandwidth

- 62 Gbps

#### Layer 2 Support

- 802.1D Spanning Tree
- 802.1w Rapid STP
- 802.3ad Link Aggregation
- 8,000 MAC Addresses
- Jumbo Frames (13K)
- IGMP Snooping
- 802.3x Flow Control

#### Layer 3 Support

- 16 Static Routes
- 8 Layer 3 Interfaces
- UDP Relay
- 232 ARP Entries
- IPv6 Management

#### Diagnostics

- Port Mirroring
- LLDP (802.1AB)
- LLDP-MED
- Cable Diagnostics
- SFP Diagnostics
- Troubleshooting Page

#### Front Panel Status LEDs

- Power Status
- LAN: link, activity

#### Port Statistics

- Number of TX/RX Frames, Collisions, Errors

#### Quality of Service

- 802.1p and DiffServ
- Four output queues per egress port
- Weighted Round Robin (WRR)
- Strict Priority Scheduling

#### VLAN

- Port-based VLANs
- 802.1Q tagged trunked VLANs
- Voice VLANs
- Private VLAN Edge
- Dynamic 802.1x assigned VLANs
- Support for up to 255 active VLANs

#### Storm Control

- Broadcast, Unicast, and Multicast

#### PoE

- 802.3af (PoE) and 802.3at (PoE+) and Legacy PoE
- 370 Watts (Total)
- Extended PoE Budget up to 740W (when connected to the NetVanta 1131)

#### Administration

- CLI (Console/Telnet/SSH)
- SNMP v3
- Web-based GUI (HTTP/SSL)
- SYSLOG
- n-Command® support
- Email Alerts
- RADIUS
- TACACS+
- TCL Scripting
- Auto Config
- Port Scheduler
- DHCP Network Forensics

#### Security

- Port authentication (802.1x)
- Port Security
- DoS Protection
- Hardware ACLs
- Microsoft Desktop Auditing

#### Wi-Fi Controller

- Controls up to 24 NetVanta WAPs

#### Environment

- Operating Temperature: 32° to 122° F (0° to 45° C)
- Storage Temperature: -4° to 158° F (-20° to 70° C)
- Relative Humidity: Up to 95%, non-condensing

#### Physical

- Chassis: 1U, 19 in. Rackmountable Metal Enclosure (Rackmount Brackets Included)
- Dimensions: 1.72 in. x 17.2 in. x 10 in. (4.4 cm x 43.7 cm x 25.4 cm) (H x W x D)
- Weight: 9.5 lbs. (4.3 kg.)
- AC Power: 110–230 VAC, 50/60 Hz
- Power: 500 Watts, 4.9 A Max

#### Agency Approvals

- FCC Part 15 Class A, UL 1950/CSA, RoHS

### Ordering Information

Equipment	Part No.
NetVanta 1534P	1702591G2
NetVanta 1000BaseSX SFP Transceiver	1200480E1
NetVanta 1000BaseLX SFP Transceiver	1200481E1
NetVanta 2.5 Gbps Multimode SFP Transceiver	1200482G1
NetVanta 2.5 Gbps Singlemode SFP Transceiver	1200483G1
NetVanta 1 Meter SFP Interconnect Cable	1200484G1
NetVanta 3 Meter SFP Interconnect Cable	1200484G3
NetVanta 1131 (RPS/EPS)	1700530F1
NetVanta 1131 RPS Cable	1700532F1
NetVanta 1131 EPS Cable	1700533F1