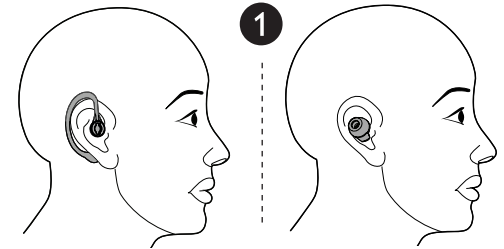


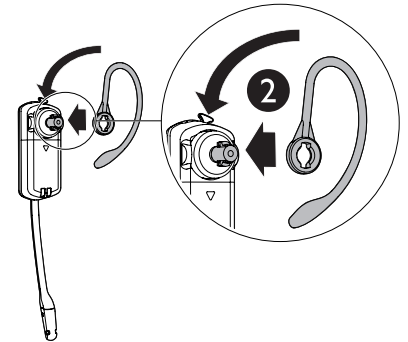
Over-the-ear-hook

Attach the headset accessories and wear the headset

1. Mount the earhooks over your ear and insert the earbuds to check the best fitting. Remove them from your ear after checking.

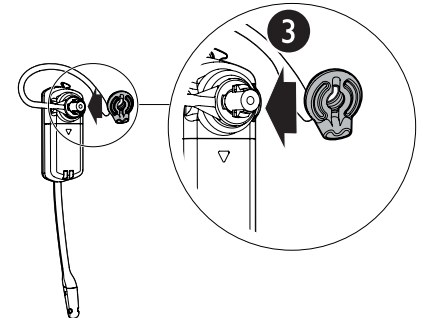


2. Insert your desired earhook to the headset.
 - Rotate it until it securely holds in place.

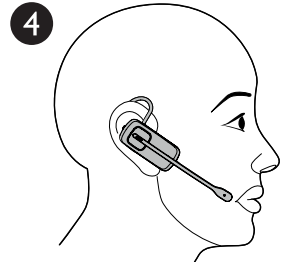


3. Insert your desired earbud to the headset.

- Make sure the protruding bump is pointing towards your mouth when placed on your ear. The protruding bump on the earbud holds the headset securely in your ear.



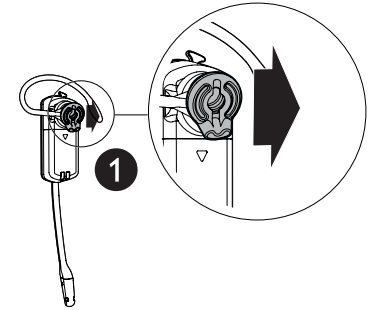
4. Hook the headset on your ear. Adjust the angle of the headset until the microphone is pointing towards your mouth.



Remove the earbud and earhook

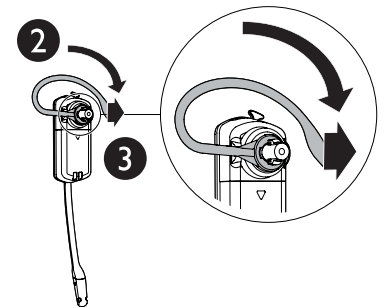
Remove the earbud and earhook, when you need to replace them in the **Over-the-ear** hook, when you need to change to the **over-the-head** and **behind-the-neck** style.

1. Hold both sides of the earbud. Twist and pull the earbud until it separates from the earpiece.



2. Rotate the earhook to vertical direction.

3. Pull the earhook until it separates from the headset.



To re-insert another set of earbud and earhook, refer to the previous section.