



OVERVIEW

The PoE Large IP Display (White LED) works well for auditoriums, gyms, multi-purpose spaces, and large rooms.

AUDIO



8" high-efficiency speaker
Audio coverage up to
600 ft²

MICROPHONE



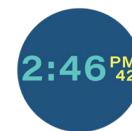
Hands-free talk back
Monitoring

FLASHERS



One red, one white, one blue
Individually controlled

DISPLAY



Viewable up to 300 ft
1-line or 2-line display
Bright white scrolling text
and pixel graphics

ANALOG INTEGRATION



Connect strobes, motion
sensors, electronic locks,
call buttons, etc.

SOFTWARE



Diagnostic software included
Compatible with third-party
software, including InformaCast,
Revolution, and Cisco CallManager

SIP INTEGRATION



SIP-enabled
Easily interfaces with
VoIP/SIP phone systems

LIGHT SENSOR



Auto-dimming display

SOLUTIONS

- Paging
- Intercom
- Bell scheduling
- Code alerts
- Emergency notification
- Access control
- Security monitoring
- Sound masking
- Music streaming

ADDITIONAL FEATURES

- Built-in web server
- Full multicast and broadcast support
- Requires Cat5 or Cat6 cable
- Atomic time
- Peripheral Interface Adapter Board provides (sold separately):
 - Audio line in
 - Audio line out
 - 2 general purpose inputs
 - 1 general purpose output relay

COMPATIBLE PERIPHERALS

Strobe Kit
AND-STROBE-KIT-1

Call Button Kit
AND-BTN-KIT-1

Peripheral Interface Adapter Board
AND-PIA-2

SOFTWARE

The IPCSL-W-RWB integrates easily with third-party mass notification software, as well as SIP and VoIP phone systems, enabling a facility to take advantage of all the device capabilities. The device also comes with diagnostic software (compatible to run alongside third-party software), and an on-board web server interface, both which provide the ability to monitor and troubleshoot the ANetD devices on the network.

Third-Party Software

- InformaCast (Singlewire)
- Revolution (Syn-Apps)
- IPSession (IPCelerate)
- MessageNet Systems
- BellComander (Acro Vista)
- And more!

VoIP Phone Systems

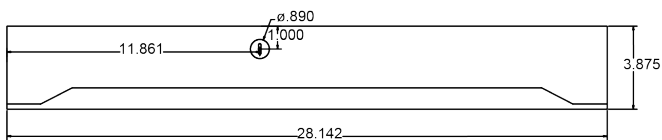
- Cisco CallManager
- Mitel
- Avaya
- 3CX
- Polycom
- And more!

IPClockWise

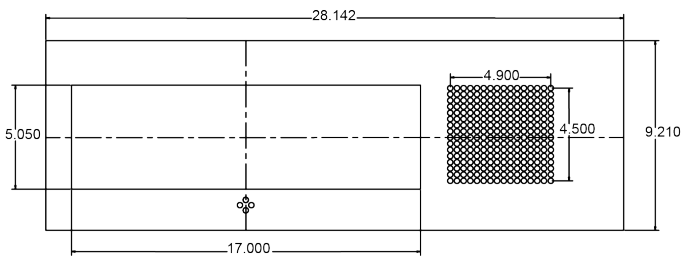
- Diagnostic tool included with device purchase
- Complements investment in third-party software
- Developed and supported by Advanced Network Devices

DIMENSIONS

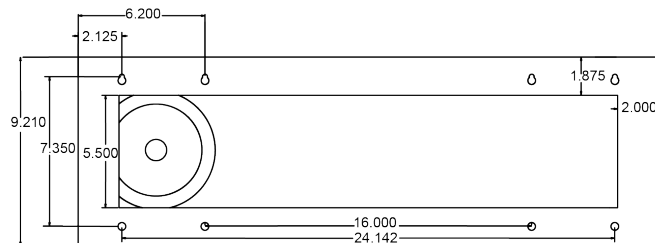
Top



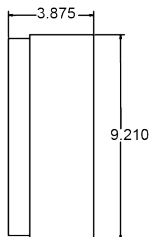
Front



Back



Side



SPECIFICATIONS

IPCSL-W-RWB

ETHERNET I/F	10/100 Mbps
AUDIO POWER	8 W / 16 W
SPEAKER SIZE	8"
AVERAGE SENSITIVITY	95dB, 1W /1M
FREQUENCY RESPONSE	60 Hz - 17 kHz
AUDIO PAYLOAD TYPES	G711, A-law and μ -law
POWER INPUT	PoE (IEEE802.3af) 15.4 W or PoE+ (IEEE802.3at) 30.0 W
SUPPORTED PROTOCOLS	SIP, IPv4, IPv6, 802.1X, HTTP, SLP, TFTP, NTP, SNMPV1 & SNMPV2c, DHCP, IGMP, ICMP, TCP/IP, LLDP-MED, UDP, MDNS & MDNS-SD
OPERATING TEMPERATURE	-10° TO 50° C (14° TO 122° F)
DIMENSIONS	28.14" W x 9.2" H x 3.88" D
WEIGHT	15 lbs (6.8 kg)
WARRANTY	2 Year Limited

Due to continual product development, specifications are subject to change without notice.



Advanced Network Devices | 3820 N. Ventura Dr. Arlington Hts. IL 60004
847-463-2236 | sales@anetd.com | www.anetd.com



Model: IPCSL-RWB
Advanced Network Devices
www.anetd.com

Conforms to UL STD 60950-1
Cert. to CAN/CSA STD C22.2 #60950-1
Tested to IEC 62471
42.5V 57.0W DC 25.5 W Max
802.3at PoE+