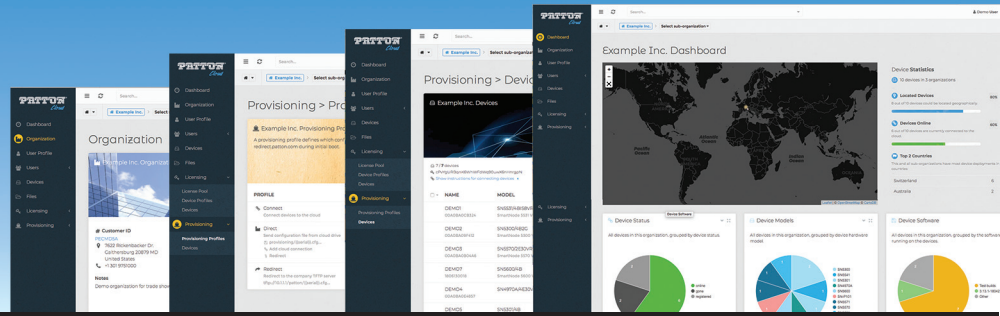


Cloud Service Plans (CSP)

PattonCloud™



Network orchestration, tools and micro services powering Unified Communications and IoT at the Edge/customer premise.

Provisioning and Administration

- Auto-provisioning capability reduces rollout costs.
- Configuration history, backup and restore provides data security and failure recovery.
- Scheduled mass upgrades for software release and configuration management.

Monitoring

- View device Status, Health, and Call Statistics remotely from centralized or distributed locations.
- Graphical presentation of key indicators provides at-a-glance status of each CPE.

Configuration

- Modify CPE configurations remotely in real time
- Built-in Wizards Reduced complexity of device configuration

Graphical User Interface (GUI)

- Convenient browser-based interface.
- Intuitive monitoring, provisioning and administration.







>Lorem ipsum dolor sit amet, consectetur adipiscing elit, sed do eiusmod tempor incididunt ut labore et dolore magna aliqua. Ut enim ad minim veniam, quis nostrud exercitation ullamco laboris nisi ut aliquip ex ea commodo consequat. Duis aute irure dolor in reprehenderit in voluptate velit esse cillum dolore eu fugiat nulla pariatur. Excepteur sint occaecat cupidatat non proident, sunt in culpa qui officia deserunt mollit anim id est laborum.

Sed ut perspiciatis unde omnis iste natus error sit voluptatem accusantium doloremque laudantium, totam rem aperiam, eaque ipsa quae ab illo inventore veritatis et quasi architecto beatae vitae dicta sunt explicabo. Nemo enim ipsam voluptatem quia

voluptas sit aspernatur aut odit aut fugit, sed quia consequuntur magni dolores eos qui ratione voluptatem sequi nesciunt. Neque porro quisquam est, qui dolorem ipsum quia dolor sit amet, consectetur, adipisci velit, sed quia non numquam eius modi tempora incidunt ut labore et dolore magnam aliquam quaerat voluptatem. Ut enim ad minima veniam, quis nostrum exercitationem ullam corporis suscipit laboriosam, nisi ut aliquid ex ea commodi consequatur? Quis autem vel eum iure reprehenderit qui in ea voluptate velit esse quam nihil molestiae consequatur, vel illum qui dolorem eum fugiat quo voluptas nulla pariatur.

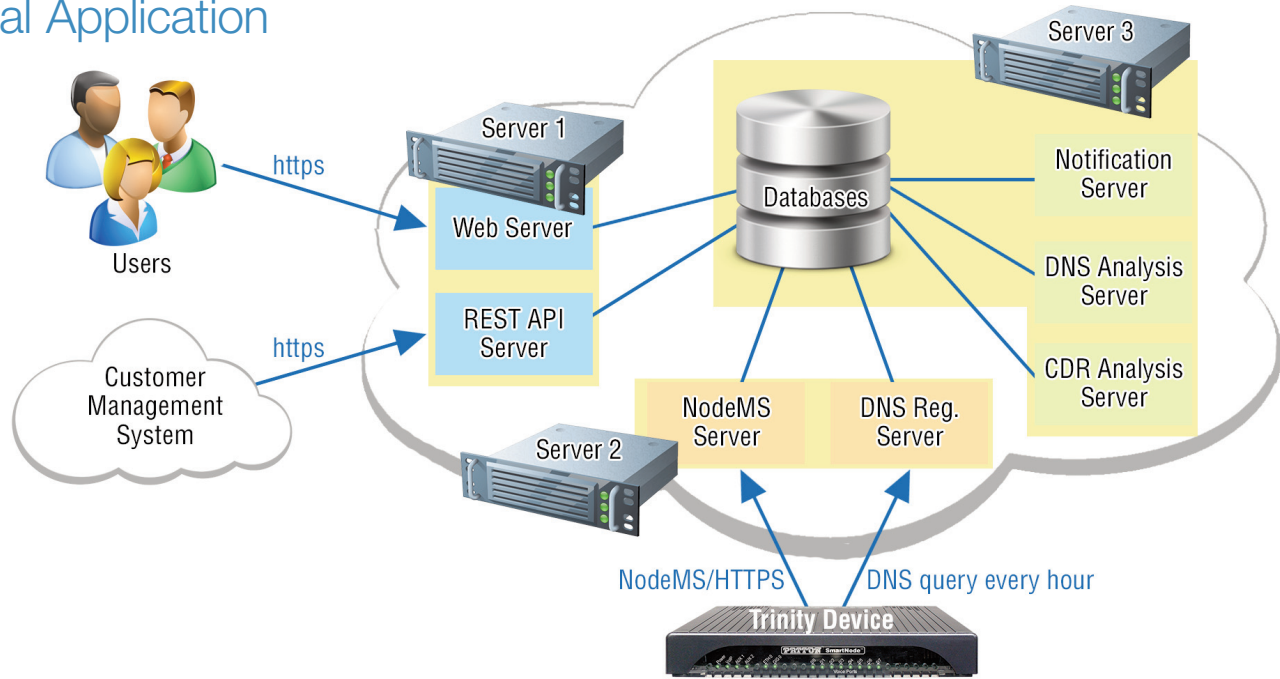
Visit patton.com/cloud for more info.

Benefits

| | | |
|---|--|---|
|  CENTRALIZED A single portal to Provision, Manage, Monitor, Secure, Alert, Troubleshoot, Analyze and Optimize CPE Devices, Licenses and Value Added Services. |  SIMPLE Automatically Provision Services. Troubleshoot, Manage, Upgrade devices with a few clicks. |  INEXPENSIVE A variety of offerings range from FREE to a low annual price. |
|  SECURE Provides a secured and managed OTT Service Demarcation delivering converged Voice & Data network protection. |  PROFITABLE Simplifies subscriber onboarding and the delivery of support and SLA services. Provides a platform for sale of additional licenses and new services. |  INTEROPERABLE SmartNode CPE devices are certified for use with all Softswitch, PBX and IP Phone brands including Broadsoft, 3CX, Metaswitch and many more. |

PattonCloud™ Cloud Service Plans (CSP)

Typical Application



Cloud Plans

The Patton Cloud offers different online service plans as described below.

| BASIC | STANDARD | ADVANCED | PROFESSIONAL |
|--------------------------|--------------------------|--------------------------|--------------------------|
| Dashboard | Dashboard | Dashboard | Dashboard |
| User/Role Management | User/Role Management | User/Role Management | User/Role Management |
| Device on-boarding | Device on-boarding | Device on-boarding | Device on-boarding |
| Status, Firmware, Uptime | Status, Firmware, Uptime | Status, Firmware, Uptime | Status, Firmware, Uptime |
| Quick-Tools | Quick-Tools | Quick-Tools | Quick-Tools |
| | CLI & Web Terminal | CLI & Web Terminal | CLI & Web Terminal |
| | License Server | License Server | License Server |
| | Redirect Server | Redirect Server | Redirect Server |
| | | Backup & Restore | Backup & Restore |
| | | FW management | FW management |
| | | | Multi-Tenant |
| | | | API |



Patton Electronics Co.
7622 Rickenbacker Drive
Gaithersburg, Maryland 20879, USA
Phone +1 301 975 1000
Fax +1 301 869 9293
E-mail sales@patton.com
Web www.patton.com

Patton-Inalp Networks AG
Meriedweg 7
CH-3172 Niederwangen, Switzerland
Phone +41 (31) 985 25 25
Fax +41 (31) 985 25 26
E-mail sales@inalp.com
Web www.inalp.com

Patton Hungary Zrt
Gábor Dénes utca 4., Infopark Building C
Budapest H-1117, Hungary
Phone +36 1 439 4840
Fax +36 1 439 4844
E-mail ce@patton.com
Web www.patton.com

07CLOUDSP-DS1