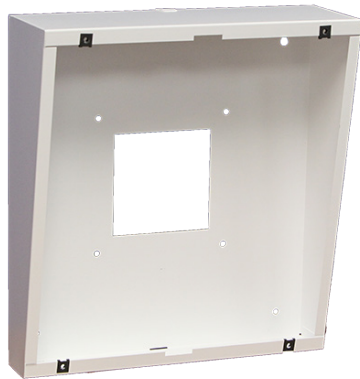


### SURFACE MOUNT (IPS-SM1)



Front



Back

### MOUNTING



Mounts directly to wall surface  
Wiremold combination 5700 knockout for 500  
and 700 series raceways

### OVERVIEW

The Surface Mount (IPS-SM1) and Flush Mount (IPS-FM1) enclosures provide two options for mounting the IP Speaker with Display models (IPSWD-RWB and IPSWD).

### FLUSH MOUNT (IPS-FM1)



Front



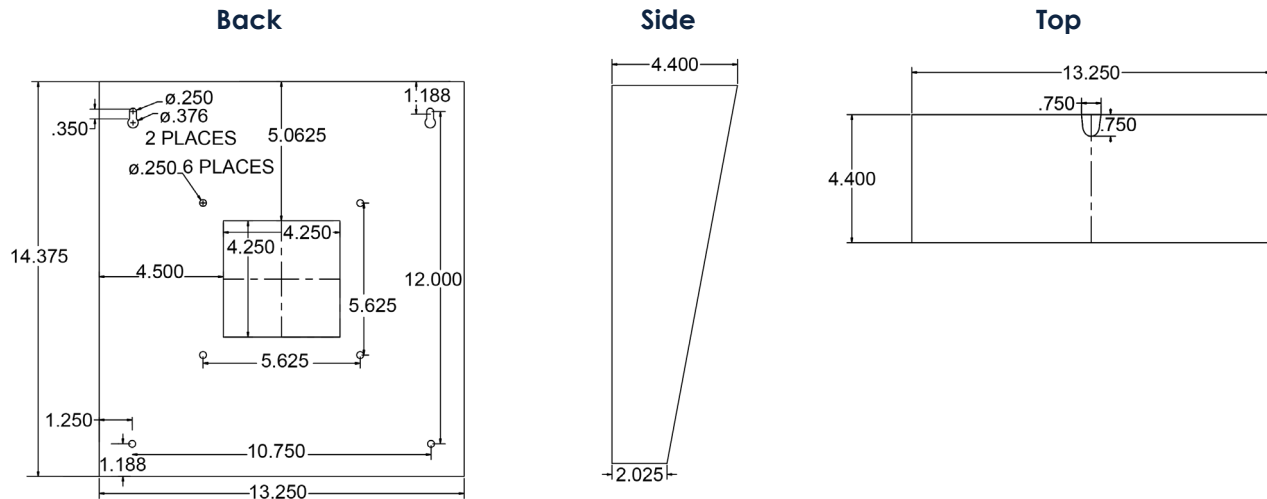
Back

### MOUNTING



Mounts directly to wall surface  
Conduit knockout provided where required

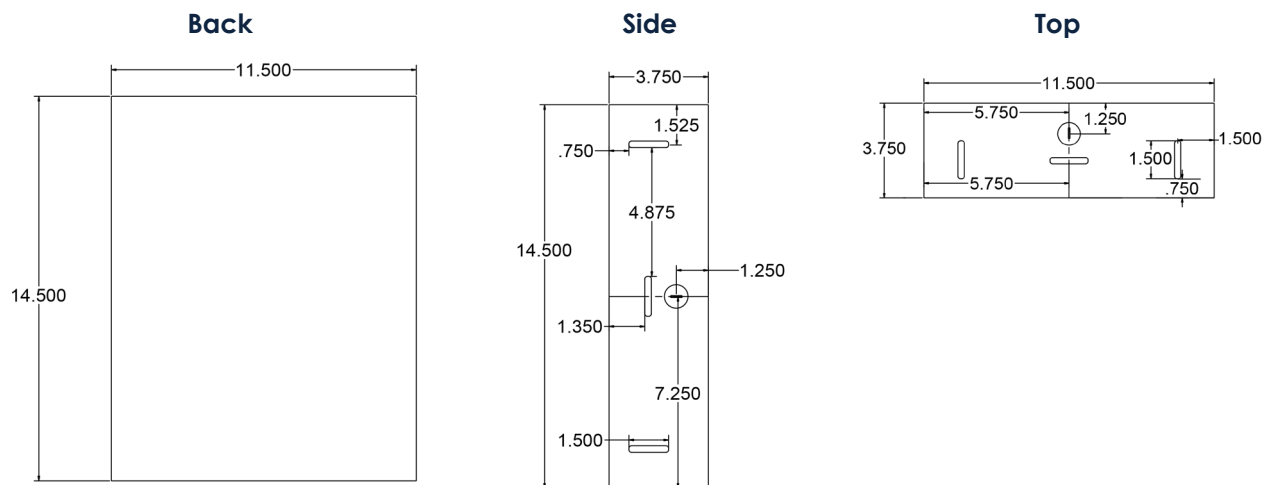
## SURFACE MOUNT DIMENSIONS



SPECIFICATIONS	IPS-SM1
MATERIAL	Powder-Coated 22-Gauge Galvanized Steel
OPERATING TEMPERATURE	0° TO 49° C (32° TO 120° F)
DIMENSIONS	13.25" W x 14.38" H x 4.4" D
WEIGHT	3.5 lbs (1.59 kg)
WARRANTY	2 Year Limited

Due to continual product development, specifications are subject to change without notice.

## FLUSH MOUNT DIMENSIONS



SPECIFICATIONS	IPS-FM1
MATERIAL	22-Gauge Galvanized Steel
OPERATING TEMPERATURE	0° TO 49° C (32° TO 120° F)
DIMENSIONS	11.5" W x 14.5" H x 3.75" D
WEIGHT	3 lbs (1.36 kg)
WARRANTY	2 Year Limited

Due to continual product development, specifications are subject to change without notice.

