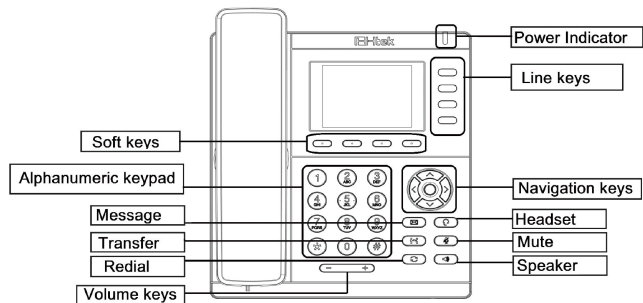


Hardware Overview



LED

Power Indicator: Steady green when power on, blinking red when the call is ringing. (Can be customized)

Line Keys: **Steady green:** During the conversation, or plan to dial a call.
Blinking red: The call is ringing.
Off: Idle interface.

Place a call

Three ways to make a call:

Handset: Pick up the handset; enter the number, then press the send softkey or press #.

Speaker: Press or the line keys; enter the number, then press the send softkey or press #.

Headset: Press , enter the number, then press the send softkey or press #.

Note:

You can also use **Contacts** or **call log** to dial the number you want, press dial key and place the call by the three ways mentioned. **More, you can also alternate the mode during the call.**

End a call

To end a call in three different modes:

Handset: Hang up the handset or press the cancel softkey.

Speaker: Press , or press the cancel softkey.

Headset: Press the cancel softkey.

Answer a call

Handset: Pick up the handset.

Speaker: Press .

Headset: Press .

Note: You can also reject the call by press the Reject softkey.

Redial

Press to redial the last call that dialed.

Call Transfer

Blind Transfer

- 1) Press or transfer softkey during the conversation, the call is on hold now.
- 2) Enter the number that transfers to.
- 3) Press or the B Transfer softkey and now the blind transfer completed.

Attended Transfer

- 1) Press or transfer softkey during the conversation, the call is on hold now.
- 2) Enter the number that transfer to and press the send softkey or #.
- 3) Start the second conversation, press or transfer softkey, then transfer completed.

Semi-Attended Transfer

- 1) Press or transfer softkey during the conversation, the call is on hold now.
- 2) Enter the number transfer to, and then press #, then you can hear the ring tone.
- 3) Press or the Tran softkey and now the Semi-attended transfer completed.

Call Conference

Assuming that A and B are in conversation. A wants to bring C (or D & E & F) in a conference:

- 1) A presses Conference softkey, the call is placed on hold.
- 2) A enters the number of C and then presses send softkey or #, C answers the call.
- 3) A presses Conference softkey, then A, B and C are now in a conference.
- 4) If want to add D to conference, A presses Hold softkey, the current conference is on hold, presses New Call softkey and dials D, D answers the call, then A, B, C and D are now in a conference.
- 5) Similarly, E and F can also be added to the conference in this way.

Note:

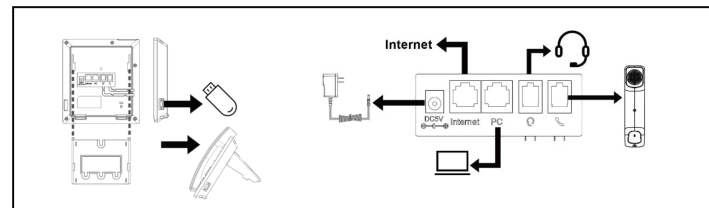
- 1) If C does not answer the call, A can go back to continue the conversation with B.
- 2) Once A hangs up the call, the conference is ended, while if conference member drops the call, others' conversation continues.

Call Mute

Press to mute the microphone during the call.

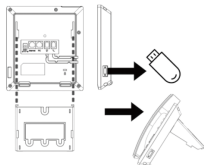
Press again to un-mute the conversation.

Instruction



USB Port

The USB port can be used for USB storage (screensaver, wallpaper, recording), phone version upgrades, phone system repairs, connecting USB hubs, USB headsets, USB buttons, headset adapter EHS30, and WFBT62 for obtaining Wi Fi or Bluetooth. By inserting a USB flash drive, functions such as USB recording, changing wallpapers and screensavers can be achieved. WFBT62 (requires additional purchase) can be connected to an IP phone, enabling the phone to support Wi Fi or Bluetooth functionality. If you need more information about WFBT62, you can refer to the WFBT62 User Guide.



Configuration

Configuration via Phone

- 1) Press Menu → Setting → Advanced Settings (Default password: admin)
- 2) Select Network: To configure the Wan Port (DHCP/Static), PC Port etc.
- 3) Select Accounts: Enable the account, fill in the SIP Server, Outbound Proxy, and the SIP registration information.

Configuration via Web

- 1) Get the IP address from the phone: Press Menu→Status→Information.
- 2) Login: Input the IP address in the web browser. The PC and phone should be in the same IP address segment (Login name: admin; Default password: admin).
- 3) Configuration: Fill in the SIP Server info on the Profile page and the Account registration info on the Account page.
- 4) Click on SaveSet and Reboot the Phone if needed.

FCC Statement

1. This device complies with Part 15 of the FCC Rules. Operation is subject to the following two conditions:
 - 1) This device may not cause harmful interference.
 - 2) This device must accept any interference received, including interference that may cause undesired operation.
2. Changes or modifications not expressly approved by the party responsible for compliance could void the user's authority to operate the equipment.
NOTE: This equipment has been tested and found to comply with the limits for a Class B digital device, pursuant to Part 15 of the FCC Rules. These limits are designed to provide reasonable protection against harmful interference in a residential installation. This equipment generates uses and can radiate radio frequency energy and, if not installed and used in accordance with the instructions, may cause harmful interference to radio communications. However, there is no guarantee that interference will not occur in a particular installation. If this equipment does cause harmful interference to radio or television reception, which can be determined by turning the equipment off and on, the user is encouraged to try to correct the interference by one or more of the following measures:
 - 1) Reorient or relocate the receiving antenna.
 - 2) Increase the separation between the equipment and receiver.
 - 3) Connect the equipment into an outlet on a circuit different from that to which the receiver is connected.
 - 4) Consult the dealer or an experienced radio/TV technician for help.

IP Phone



Quick Reference for UC921G V2

Tel: 0086-25-84658050 | Fax: 0086-25-84658319 | Mail: support@htek.com | Web: www.htek.com
Add: 5th Floor, Building No.1, Huashen TechPark, No.10 Huashenmiao, Yuhuatai District, Nanjing,
210012, China
Copyright: ©2025 Nanjing Hanlong Technology Co., Ltd. All rights reserved.