

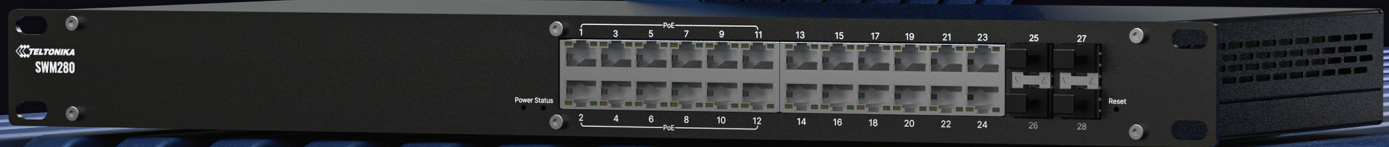
SWM280



SWM280 360° VIEW

POE+ MANAGED SWITCH

The SWM280 is a powerful L2 managed switch with L3 features for advanced network control. Designed for high-performance connectivity, this 24-port switch combines 12 PoE+ ports, 12 Gigabit Ethernet ports, and 4 SFP ports. The PoE+ supply up to 30 W per port and a total power budget of 300 W. The SWM280 supports PROFINET & other industrial protocols, enabling flexibility over management and power supply.



PoE+

Deliver power and data through 12 PoE+ ports with up to 30W per port

L2+

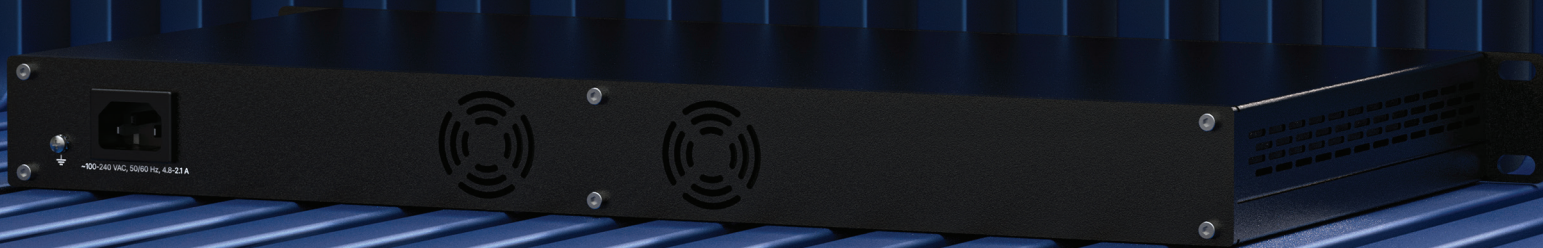
Advanced routing protocols, VLAN segmentation

CLOUD ENABLED

Shipped with 2 years of RMS Management

PROTOCOLS

Profinet, MRP, and EtherNet/IP for mixed industrial environments



RMS

REMOTE MANAGEMENT SYSTEM

COMPATIBLE WITH SWM280

MANAGEMENT

ALERTS

CONFIGURATION

ACCESS

FOTA

KEY FEATURES

HARDWARE

RAM	Realtek, single core, 500MHz, MIPS-4KEc
Flash storage	128 MB, DDR3
Powering options	C14 connector
Input voltage range	100-240 VAC, 50/60 Hz
Input voltage range for PoE	44 – 57 VDC
Power consumption	Idle: 7.5 W / Max: 325 W / PoE Max: 300 W
PoE standards	IEEE 802.3af
IEEE 802.3 series standards	802.3i, 802.3u, 802.3ab, 802.3x, 802.3az
Status LEDs	1 x Power LED, 48 x ETH status LEDs, 1 x Status LED, 4 x SFP status LEDs
Ethernet	24 x RJ45 ports, 10/100/1000 Mbps
SFP	4 x SFP ports
Ingress protection rating	IP30
Operating temperature	0 °C to 50 °C
Dimensions (W x H x D)	483 x 44 x 234 mm
Weight	1770 g
Mounting options	Rack mounting kit

INDUSTRIAL PROTOCOLS

Profinet	Profinet Class B conformance (available with optional order code)
----------	---

PERFORMANCE SPECIFICATIONS

Bandwidth (Non-blocking)	56 Gbps
Packet buffer	512 KB
MAC address table size	8K entries
Jumbo frame support	10000 bytes

SERVICES

Supported services	EtherNet/IP, SNMP V2, V3, LLDP, Network Management
--------------------	--

NETWORK

MRP	MRP client role, MRP manager role
L2 features	Loop protection, Forwarding table, VLAN, STP/RSTP
DHCP	DHCP server, DHCP client, DHCP static leases capable of using MAC with wildcards
Port Settings	Enable/disable, link speed control, port isolation, EEE (802.3az) management, Port Mirroring
L3 Features	Static IPv4 routing, static IPv6 routing, DHCPv6 client, static IPv6 address

QOS

QOS	Port priority, DSCP priority, 802.1p priority, TOS
Scheduling method	SP/WFQ/WRR
Bandwidth control	Rate limiting, storm control

DIAGNOSTICS

Tools	Cable diagnostic, ping, traceroute, nslookup
Ping reboot	Capability to restart PoE in a specific port

FRONT VIEW

BACK VIEW

